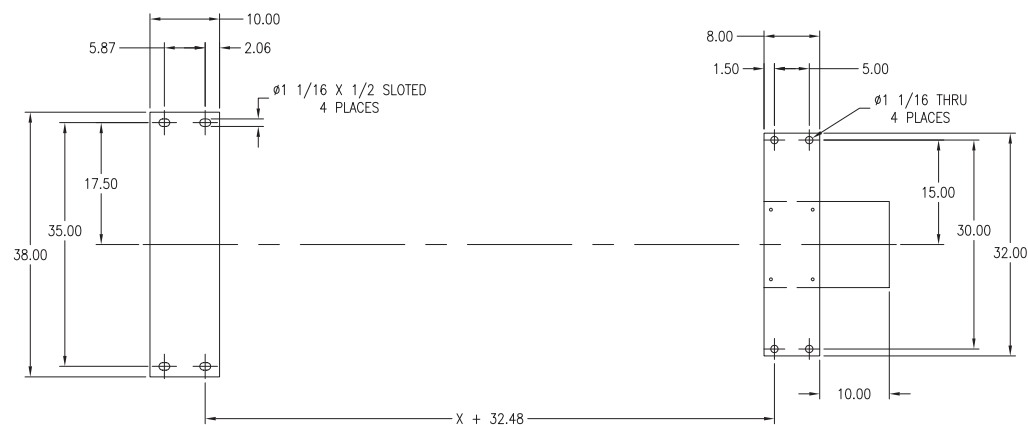
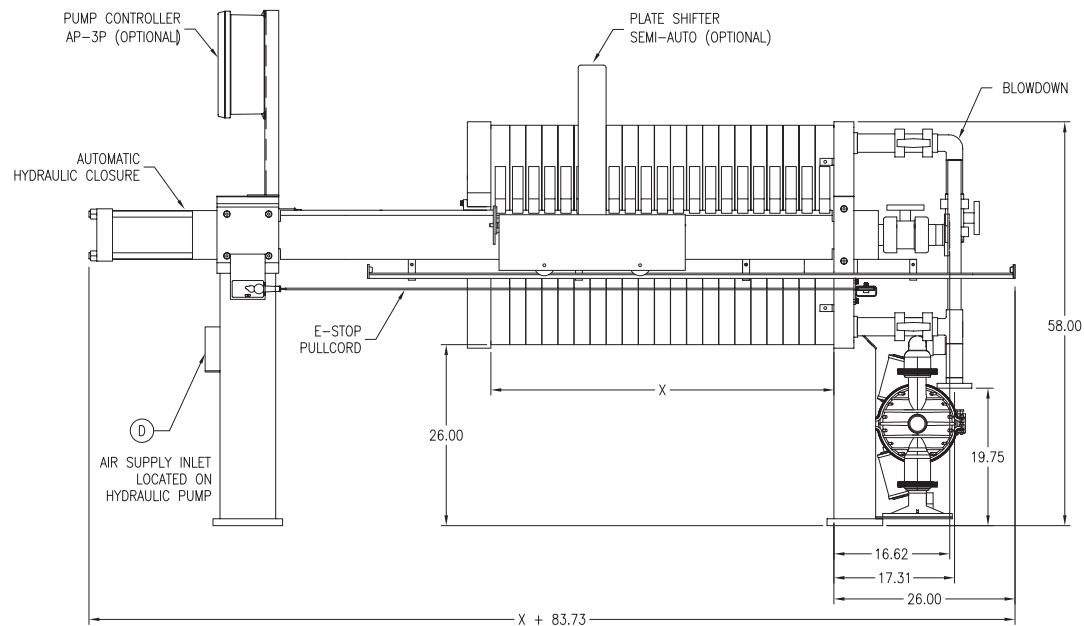


2

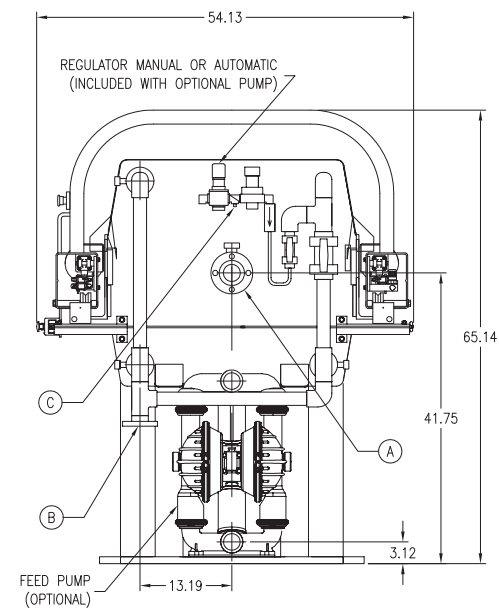
1



NOTES:

1. DRAWING IS FOR REFERENCE ONLY. CONSULT FACTORY FOR DETAILED CONSTRUCTION DRAWINGS AND SPECIFICATIONS.
2. SEE FILTER PRESS SPECIFICATIONS SHEET FOR "X" DIMENSION.

CONFIGURATION APPROVAL BY _____ DATE: _____



(A)	PROCESS INLET Ø2" PIPE FLANGE
(B)	PROCESS OUTLET Ø1 1/2" PIPE FLANGE
(C)	AIR BLOW DOWN AND PUMP INLET Ø1/2" NPT
(D)	HYDRAULIC SUPPLY AIR INLET Ø1/2" NPT

PLATE SEALS

- ☐ EPDM (GASKETED) (STD)
☐ VITON (GASKETED)
☐ NON GASKETED

CLOTH TYPE

- ☐ PMU (STD)
☐ PMM
☐ FTW (POLYESTER)
☐ PSM

PLATE & PRESS PRESSURE RATING

- ☐ 100 PSI (STD)

CAKE THICKNESS

- ☐ 32mm (1.25") (STD)

PUMP CONTROLS

- ☐ AP3P

PLATE SHIFTER

- ☐ NONE
☐ SEMI-AUTOMATIC

FEED PUMP

- ☐ NONE
☐ PRESS MOUNTED

MATERIAL HANDLING

- ☐ SLUDGE CART

BLOWDOWN

PIPING MATERIAL

- ☐ PVC (STD)
☐ CPVC
☐ CARBON STEEL
☐ 304 S.S. (TRICLOVER)
☐ 316 S.S.

SEALS MATERIAL

- ☐ EPDM
☐ BUNA
☐ VITON
☐ TEFLON

MODEL # _____



800 Semi-Automatic Filter Press, Standard Series

DRAWN BY
L_Gonzalez

DATE
9/2/03

DWG NO
190001

SHEET 1 OF 2

REV
D

2

1

HiPerk Machinery Co.

Engineering Data

Nominal Volume		Number of Plates	Filter Area		"X" Dimension (·)				Shipping Weight		Operating Weight	
					Gasketed (CGR)		Non-Gasketed (NGR)					
(ft³)	(liters)		(ft²)	(m²)	(in)	(mm)	(in)	(mm)	(lb)	(kg)	(lb)	(kg)
10	283	21	213.0	19.8	48.375	1,229	49.25	1,251	4,434	2,011	5,234	2,374
12	340	25	255.6	23.7	57.5	1,461	58.5	1,486	4,686	2,126	5,646	2,561
15	425	31	319.5	29.7	71.125	1,807	72.25	1,835	4,939	2,240	6,139	2,785
20	566	41	426.0	39.6	93.875	2,384	95.375	2,423	5,444	2,469	7,044	3,195
25	708	51	532.5	49.5	116.5	2,959	118.5	3,010	5,948	2,698	7,948	3,605
30	850	61	639.0	59.4	139.25	3,537	141.625	3,597	6,401	2,903	8,801	3,992

NOTES: Volume/Chamber = 0.50 ft³ (14.2 L)
 Filter Area/Chamber = 10.65 ft² (0.99 m²)
 Dimension and weights are for reference purposes only
 Weights do not include ancillary equipment
 For presses equipped with plate shifter add 200 lbs (182 kg)
 Operating weight is calculated with wet filter cake density of 85 lb/ft³ (1.36 kg/L)
 Cloth thickness on NGR based on 1mm/chamber
 * Filter plate stack length dimension (approximate)

P08L SIDEBAR

100 psi (7 bar) Design

PLATE TYPE

800mm CGR/NGR

CAKE THICKNESS

1.25" (32mm)

DWG NO

190001
SH2

REV
D

HiPerk Machinery Co.

Engineering Data

Nominal Volume		Number of Plates	Filter Area		"X" Dimension (-)				Shipping Weight		Operating Weight	
					Gasketed (CGR)		Non-Gasketed (NGR)					
(ft ³)	(liters)		(ft ²)	(m ²)	(in)	(mm)	(in)	(mm)	(lb)	(kg)	(lb)	(kg)
10	283	27	268.1	24.9	55	1,397	56	1,422	5,082	2,305	5,932	2,691
12	340	33	329.9	30.7	67	1,702	68.25	1,734	5,365	2,434	6,385	2,896
15	425	41	412.4	38.3	83	2,108	84.625	2,149	5,742	2,605	7,017	3,183
20	566	53	536.1	49.8	107	2,718	109	2,769	6,308	2,861	8,008	3,632
25	708	67	680.5	63.2	135	3,429	137.625	3,496	6,968	3,161	9,093	4,125
30	850	79	804.2	74.7	159	4,039	162	4,115	7,534	3,417	10,084	4,574

NOTES: Volume/Chamber = 0.39 ft³ (10.9 L)
 Filter Area/Chamber = 10.31 ft² (0.958 m²)
 Dimension and weights are for reference purposes only
 Weights do not include ancillary equipment
 For presses equipped with plate shifter add 200 lbs (182 kg)
 Operating weight is calculated with wet filter cake density of 85 lb/ft³ (1.36 kg/L)
 Cloth thickness on NGR based on 1mm/chamber
 * Filter plate stack length dimension (approximate)

P08L SIDEBAR

100 psi (7 bar) Design

PLATE TYPE

800mm CGR/NGR

CAKE THICKNESS

1.00" (25mm)

DWG NO

190001
SH3

REV
D